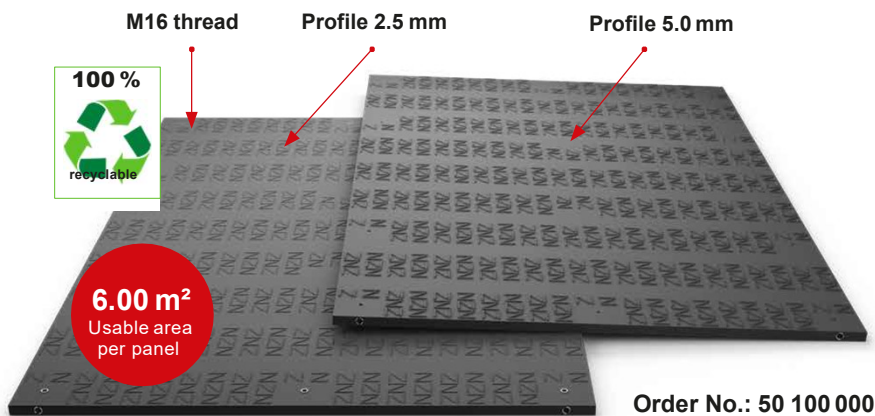


MRS BAUSTRASSE

Rental|Sales|Service

► Mobile Road Systems

MRS - Heavy



► Properties

The **MRS - Heavy Ground Protection Panels** are screwed together in both length and width, creating a permanently connected driveway or work platform for heavy loads. The load-bearing capacity of the subsurface is significantly optimized.

Material: polyethylene, high molecular weight

Dimensions: 3000 x 2000 x 45.5 mm (incl. profile)

Weight per panel: approx.. 221 kg

Surface / colour: 5.0 & 2.5 mm profile / black-coloured

Load capacity: approx. 160 t

(depending on the ground conditions)

Transport per truck: 100 units (600 m²)



Mobile crane
working spaces



Heavyload
transports



Mobile
logistics



Wind power
construction



Temporary
walkways



Road construction and
access routes



Transmission



Concerts
and events



Mobile
parking spaces

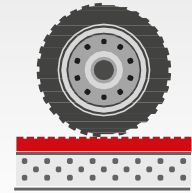


Tent floors

■ **Lower transportation costs with MRS - Heavy** panels. They are easier to transport than most alternative road mats for temporary use.



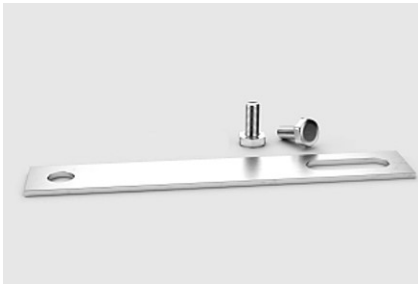
M: +49 176 11007755



► Accessories

MRS - Heavy Accessories

The **MRS - Heavy Ground Protection Panels** are easy to transport with a forklift (using a load handling device and a four-strand chain sling) and quickly connected with **M16 screws**.



■ Metal Connectors (Universal) M16 Screws

The metal connectors are used to screw ground protection panels together.

Weight: 0.285 kg

Order No.: 50 100 001



■ Load Handling Devices

Load capacity 4 pieces each: 500 kg

Load capacity 1 piece each: 170 kg

This load handler is mandatory for MRS - Heavy.

Weight / piece 0.462 kg

Weight / set (4 pieces): 1.85 kg

Order No.: 50 500 000



■ MRS Heavy - Ramps

■ 2000 mm length

with 3 screw holes

Weight: 15 kg

Order No.: 50 500 001

■ 3000 mm length

with 4 screw holes

Weight: 23 kg

Order No.: 50 500 002

